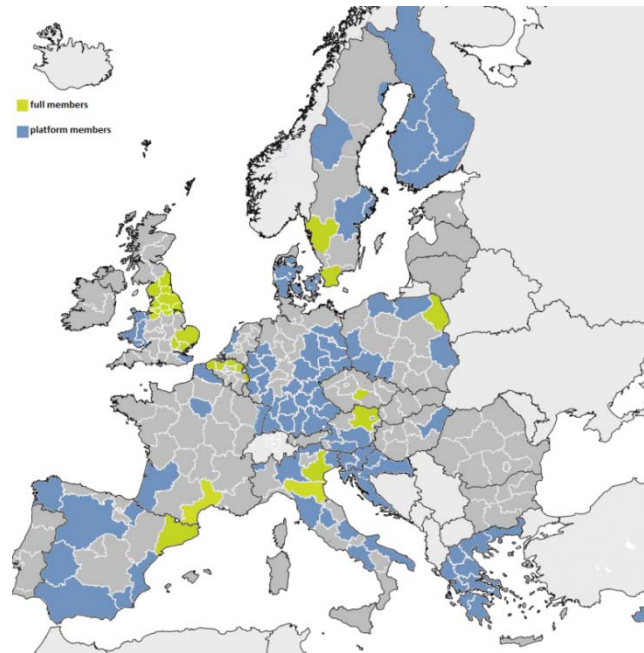


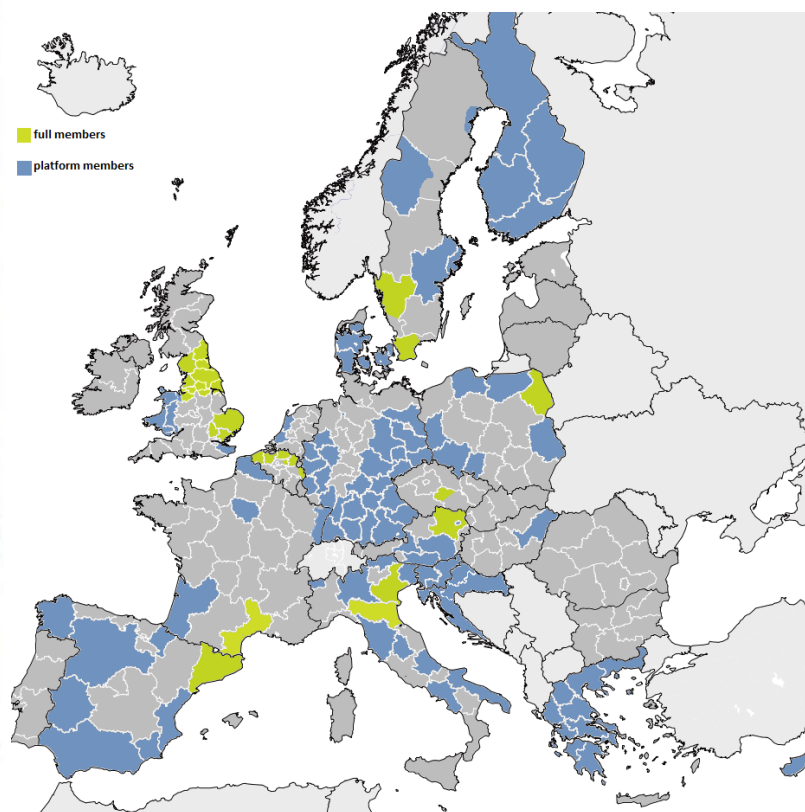
Bringing regions together for better health

Kirsten Currie, EUREGHA Secretariat

“Living Healthy and Active in an Ageing Europe”, Bologna, 3rd of June 2013



EUREGHA today: high level experts within an efficient and collaborative structure



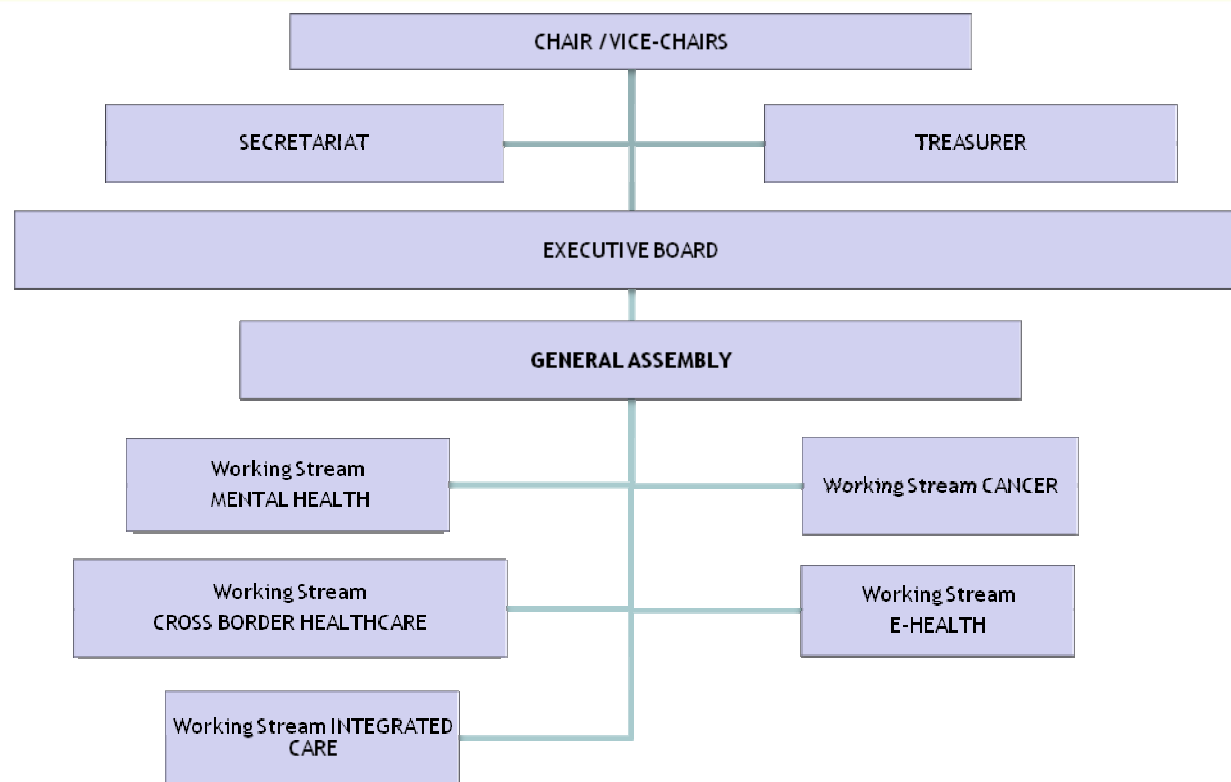
Founding members

- Catalonia (ES)
- East of England (UK)
- Flanders (BE)
- North West of England (UK)
- Podlaskie (PL)
- Skåne (SE)
- Västra Götaland (SE)
- Veneto (IT)
- Lower Austria (AT)

Joined in 2012

- Emilia Romagna (IT)
- Vysočina (CZ)
- German Speaking Belgium (BE)
- Languedoc-Roussillon (FR)

EUREGHA ASBL Organizational Chart



- Chair – Catalonia
- Vice Chairs – Flanders and Lower Austria
- Treasurer – North of England

EUREGHA in Brussels

Liaising with EU institutions

- European Commission – Directorate General for Health and Consumers (DG SANCO)
- EU Presidencies
- Committee of the Regions' (CoR) Interregional Group on Health

Liaising with other EU stakeholders

- Health related networks – AER, CORAL, EuroHealthNet and ERRIN
- EU Platforms – European Health Policy Forum and eHealth Stakeholder Group
- Regional Offices

EUREGHA and the European Innovation Partnership on Active and Healthy Ageing

Participation of EUREGHA in the EIP – AHA

- B3 Action Group on Integrated Care
 - Action Area 1: Organisational Models
 - Task co-ordinator
 - Commitment: workshop and data collection
 - Action Area 5: Care Pathways
 - Collaborator
 - Commitment: workshop
 - Action Area 8: Finance/Funding
 - Collaborators
 - Commitment: elaborating questionnaires and data collection

Other Activities and Communication Tools

Activities 2013 - 2014

- Working Streams
 - Mental Health
 - Cancer Screening
 - Cross Border Health Care
 - eHealth
 - Integrated Care
- Joint Actions
 - Mental Health
 - European Partnership for Action Against Cancer (EPAAC)
 - Chronic Diseases
- Lunch Briefings
- Policy Briefings

EUREGHA Activities and Communication Tools

- Input opinions to EUREGHA joint positions to EP and EC
- High Level Conference

Communication Tools

- Newsletter
- Members Section of EUREGHA website
 - Mapping documents
 - Full Members contact information
 - Documents/Presentations from EUREGHA activities
- Social media

Thank you for your attention



EUREGHA Secretariat
Rue du Luxembourg 3
1000 Brussels, Belgium

+32- 2 613 28 96

secretariat@euregha.net
ingrid.jansson@euregha.net

www.euregha.net